

Decontamination Sink Solutions

for Medical and Sterile Processing

Ergonomic • Height Adjustable • Customizable



CHAPARRAL®

Ergonomic Medical Equipment

Chaparral's Decontamination Sinks are designed for the specific space and technical needs of each Sterile Processing Department. With an emphasis on ergonomic design, height-adjustable options, and customizable bays, Chaparral reprocessing sinks and scope flushing sinks contribute to enhanced workflow and increased compliance.

ERGONOMIC

Chaparral's adjustable height reprocessing sinks are ergonomically designed to help reduce the neck, back and shoulder strain caused by improper sink heights.

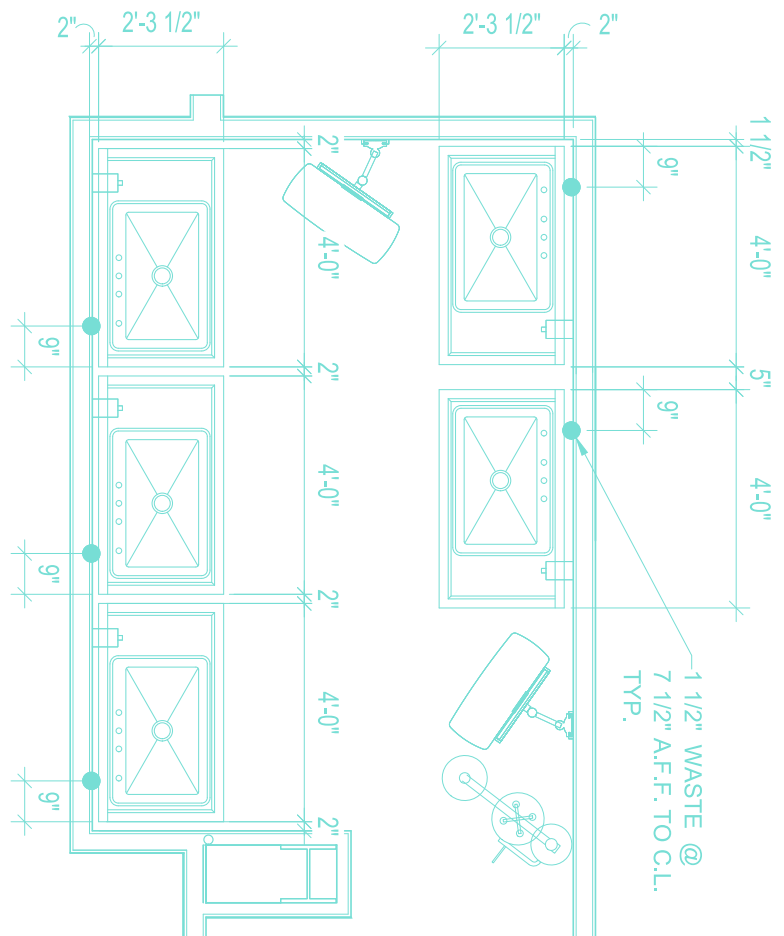


CUSTOM BUILT

Each sink is customizable and built to order, made in Portland, Oregon, USA by union sheet metal craftspeople using long-lasting, medical grade stainless steel and high-quality components.

DESIGN PLANNING

Our team of experts works daily with customers to provide free design planning assistance to ensure there are no issues during and after installation. Our services include dropping Chaparral equipment blocks into your CAD drawings, ensuring clearances, checking for conflicts and providing spacing recommendations.



Height-Adjustable Scope Flushing Sinks

Series: AHS-ES



Chaparral's adjustable height endoscopy sinks offer ergonomic benefits to pre-sanitation scope processing. Our proprietary design incorporates the Custom Ultrasonics SAFS-S8 Scope Assist Flushing Sink Bowl, allowing each user to clean scopes at the optimum level for their height. This helps promote an efficient and safe processing environment.

FEATURES

- Integrated Custom Ultrasonics SAFS-S8 Scope Assist Flush Sink
 - Provides means of flushing endoscope channels with detergent and water
 - Allows for soaking and manual wiping/brushing of most flexible endoscopes
 - Provides environment for wet leak testing of endoscope
 - FDA cleared
- Vertical adjustment of 8" (direct waste) and 6" (indirect waste)
- Highly durable medical grade stainless steel

INCLUDED

- Plumbing supplies for indirect waste
- 4.5" backsplash
- Drain board
- Marine edge
- Cabinet doors

ACCESSORIES AND OPTIONS

In-wall/direct waste telescopic plumbing, 2-tier storage rack, end-splashes, upper cabinet, virtual training services conducted by Custom Ultrasonics, on-site training and installation conducted by Custom Ultrasonics.

STANDARD MODELS

Model #	# of Sink Bowls	Length
AHS-ES-L	1	58"
AHS-ES-R	1	58"
AHS-ES-C	1	64"

Reprocessing Sinks

Height-Adjustable Decontamination Sink

Series: AHS



Adjust the countertop height of our medical-grade stainless steel sinks at the touch of a button to accommodate multiple users of varied heights and enable safe, thorough cleaning of medical instruments prior to final sterilization. Our reprocessing sinks include proven direct (in-wall) and indirect (floor sink) waste plumbing solutions that meet most local codes, and are designed to reduce installation risk and scheduling delays.

FEATURES

- Vertical adjustment of 8" (direct waste) and 6" (indirect waste)
- Code-verified plumbing solutions
- Available in multiple standard sink and length configurations

INCLUDED

- 12" gooseneck faucet(s) with vacuum breaker(s)
- 4" backsplash
- Workflow customization (L>R, R>L)
- Drain board
- Marine edge
- Gallon-etched markings
- Plumbing supplies for indirect waste
 - Supply hose(s)
 - Water shut off valve(s)
 - Lever twist drain(s)
 - Drain manifold system
- Partial skirt

ACCESSORIES AND OPTIONS

In-wall/direct waste telescopic plumbing, pre-rinse faucet, purified water faucet, water gun and tip attachments, air blowgun, end-splashes, sink covers, upper storage cabinet, full skirt, skirt doors

Adjustable Height Sinks

STANDARD MODELS

Model #	# of Sink Bowls	Length
AHS-3B-147	3	147"
AHS-3B-120	3	120"
AHS-3B-106	3	106"
AHS-2B-120	2	120"
AHS-2B-106	2	106"
AHS-2B-97	2	97"
AHS-1B-72	1	72"

Also available: Fixed Height Sinks

STANDARD MODELS

Model #	# of Sinks Bowls	Length
FHS-3B-147	3	147"
FHS-3B-120	3	120"
FHS-3B-106	3	106"
FHS-2B-120	2	120"
FHS-2B-106	2	106"
FHS-2B-96	2	97"
FHS-1B-72	1	72"