



Workstation Solutions for Blood Draw Labs

A flexible, modular phlebotomy
workstation solution

Designed for the ergonomic
needs of phlebotomists



CHAPARRAL®

Ergonomic Medical Equipment

Ergonomic Phlebotomy Workstation

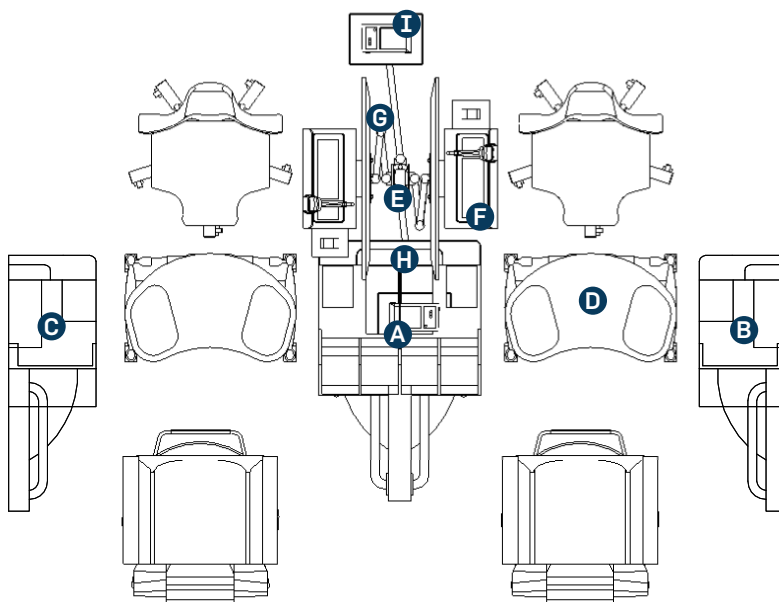
The innovative Ergonomic Phlebotomy Workstation has been engineered to increase safety and efficiency for health care staff. Tested and proven in clinical studies to significantly reduce overall musculoskeletal risk to phlebotomists, for greater employee satisfaction and more cost savings for health systems.

Deployed in thousands of healthcare settings nationwide, the workstation has a distinctive scalable, modular design that allows it to be used in any number of workplace configurations. Highly durable construction is designed to handle the most demanding patient caseloads.

All of Chaparral's products are ADA and HIPAA compliant. Our products are made in Portland, OR by union sheet metal craftspeople.

The Phlebotomy Workstation includes an Ergonomic Draw Station, an Adjustable Draw Stand and the Apollo Technology Pole. Their modular components allow for designs of up to 12 – or more – blood draw stations.

Example of a two-station blood draw station:



COMPONENTS

- A** 1x Central Station (MMIV-CS)
- B** 1x Left Station (MMIV-LS)
- C** 1x Right Station (MMIV-RS)
- D** 2 x Adjustable Draw Stand (UN-ADS)
- E** 1x Apollo Technology Pole (AP-6-234)
- F** 2 x Keyboard/mouse tray + arm (various)
- G** 2 x Display mount + arm (various)
- H** 2 x CPU holder + arm (various)
- I** 1x Printer tray + arm (AP-6-PT)

Patients chairs provided by Chaparral partner company. Please inquire.

Workstation Design Planning

Our team of experts can provide you with free design planning assistance to ensure there are no issues during or after installation. Our services include dropping Chaparral equipment blocks into your CAD drawings, ensuring clearances, checking for conflicts and providing spacing recommendations.

Ergonomic Draw Station

Series: MMIV

Chaparral's Ergonomic Draw Stations are engineered to help reduce repetitive strain injuries in phlebotomists. Uniquely designed with customizable supply storage above waist level and within easy reach, our blood draw stations require no bending, turning, or excessive reaching to access tools and disposables. Each workstation includes both a left and right station for optimal storage and ergonomic benefits. A modular design facilitates either single or multi-phlebotomy works designs.

Ergonomic Draw Stations have undergone extensive independent, evidence-based studies conducted in partnership with OSHA, large scale health systems and ergonomic experts. With an elimination of or significant reduction of (92%) risk factors, including a reduced musculoskeletal risk of up to 91%, the Ergonomic Draw Station is proven to increase the wellness of workers.



FEATURES

- Ergonomically engineered to reduce phlebotomist musculoskeletal risk
- Reduces needle stick injuries
- Increases lab efficiency
- Contributes to HIPAA compliance
- Durable cabinets have a long useful life
- Customizable storage
- Modular, scalable design

INCLUDED

- Glove holder inserts
- Tube holders
- Loose tube holders
- Tube & wipe holders
- Trash cans
- Large sharp disposals

STANDARD MODELS

Model #	Description
MMIV-CS	Central Station
MMIV-LS	Left Station
MMIV-RS	Right Station

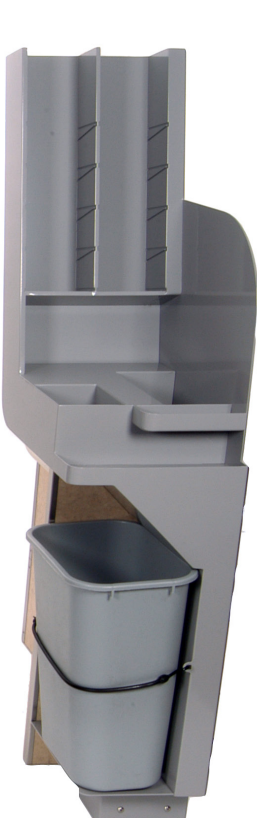
Check out our Phlebotomy Station Layout Guide for typical examples and order information.



MMIV-LS



MMIV-CS



MMIV-RS



Adjustable Draw Stand

Series: UN-ADS

Chaparral's UN-ADS series of adjustable draw stands help nurses and phlebotomists facilitate safe and efficient blood draws. In combination with Chaparral's Ergonomic Draw Station and Apollo Technology Poles, our Adjustable Draw Stands help reduce risk of injury, increase workplace productivity, and create a better experience for patients.

Chaparral offers two styles — one designed with maximum counter space, and one with increased access to patients' arms. With either style, you can trust the durable build and improved ergonomics for long-lasting efficiency and effectiveness.

FEATURES

- Ergonomic work surface adjusts 15" vertically (27" – 42") to accommodate different user heights
- Interlocking break system features one pedal to lock and one to unlock all four casters simultaneously
- Solid surface worktop is nonporous and resistant to blood stains
- Work surface includes recessed anti-fall zones for tubes and other supplies
- Heavy cast aluminum base provides stability
- Made from medical-grade materials

STANDARD MODELS

Model #	Description
UN-ADS	Maximum work surface
UN-ADS-DT	Enhanced ergonomics

Chaparral's ergonomic phlebotomy workstation reduced musculoskeletal risk factors by up to 91%*



Apollo Technology Poles

Series: AP

Bring technology to your workstation, no matter where you work. Apollo Technology Poles attach floor-to-ceiling to allow monitors, computers, barcode scanners and accessories to be mounted anywhere in your lab, without needing a desk or wall. Ergonomically designed to streamline your workplace by allowing power and data to run down the pole from the ceiling, they eliminate the need for extension cords or floor outlets.

FEATURES

- Works with a monitor, keyboard, CPU, printer and other accessories
- Designed for stand-alone installation with floor to drop-ceiling heights of up to 17'
- Ergonomic arms are height adjustable and articulate 180+ degrees
- Compatible Humanscale healthcare mounts and arms with adaptor available
- Wall-mounted Apollo Technology Tracks are also available where walls are present

STANDARD MODELS

Model #	Description
AP-6-234	Floor-to ceiling pole
AP-6-60	Wall-mounted pole

ACCESSORIES

See the Apollo Reference Guide for a full list of available arms and mounts.

*Chaparral. "The Importance of Ergonomic Design for Phlebotomist Safety and Efficiency." (2020)